



Agent (France.com)
1 800 230 0426
<http://www.france.com>
reservations@france.com



3-Day Paris Luxury Package

\$1,679.00 USD PER PERSON

INCLUDED IN THIS 3-DAY LUXURY PACKAGE:

- Round Trip Private transportation from CDG or Orly airport to your hotel in Paris
- 2 night accommodation (based on double room) in a selected 5 **** star hotel, breakfast included.
- Private Paris 2.5 hour discovery tour with pick up and drop off at your hotel
- Skip-the-line Eiffel tower entrance ticket.
- Private-guided tour of the Louvre Museum (with skip-the-line ticket entrance and pick up and drop off at your hotel in Paris)
- Bateaux Parisiens Premier Seine Dinner cruise



FRANCE
.com

TRIP SUMMARY

Day 1

- 11:00 AM 11:00 AM (approx) Arrival and transfer - Charles De Gaulle International Airport, Aéroport De Paris-Orly, Gare du Nord, Paris Gare de Lyon
- Choice of 5 ***** Luxury hotels for your Paris Luxury Package - L'hôtel Du Collectionneur, Victoria Palace Hôtel, Hôtel Raphael, Le Cinq Codet
- 1:30 PM 1:30 PM Private guided tour of Paris in a minibus - Place Vendôme, Concorde, Palais Garnier, Musée D'orsay, Palais Du Luxembourg, L'Arc de Triomphe de l'Etoile
- 5:00 PM Eiffel Tower skip-the-line entrance - Eiffel Tower

Day 2

- Morning: Private-guided visit of the Louvre museum - L'OpenTour, Musée Du Louvre
- Visit of Notre-Dame on your own - 8E Centenaire De La Cathédrale Notre-Dame De Paris
- 1:00 PM Lunch at your leisure
- 2:00 PM Afternoon at Leisure with a private chauffeur/guide - Sacré-Cœur, Le Moulin De La Galette, Saint-Sébastien, Place des Vosges, Panthéon, Jardins du Luxembourg, Sacré-Cœur, Musée Carnavalet, Musée d'Orsay, Galeries Lafayette
- 8:00 PM Seine River Cruise Dinner - Bateaux Parisiens - Luxury Dinner Cruise - Service Premier

Day 3

Transfer from your hotel to Paris airport or Paris train station - Charles De Gaulle International Airport, Aéroport De Paris-Orly, Gare du Nord, Paris Gare de Lyon

Price per person: \$1,679.00 USD

DAY 1



11:00 AM
Departure

11:00 AM (approx) Arrival and transfer

After landing at your Paris airport and having gone through customs, your driver will meet and greet you with a sign bearing your name as you walk out of the customs areas. You'll soon be on your way to your hotel in Paris.

You'll be able to check in, and depending on your arrival time, the room may be ready for you. If your plane lands in the morning, the room may not be ready yet, but you'll get a chance to leave your luggage at the hotel so you can start your discovery of Paris.



Charles De Gaulle International Airport

Paris, PARIS, FR, 95700
+33 1 48 62 22 80

Paris-Charles de Gaulle Airport, also known as Roissy Airport (or just Roissy in French), in the Paris area, is one of the world's principal aviation centres, as well as France's largest airport. It is named after Charles de Gaulle (1890–1970).



Aéroport De Paris-Orly

Paray Vieille Poste, ESSONNE, FR, 91550
01 49 75 15 15



Gare du Nord

18 Rue de Dunkerque, Paris, ÎLE-DE-FRANCE, FR, 75010
0 892 35 35 35



Paris Gare de Lyon

Place Louis Armand, Paris, PARIS, FR, 75571
0 892 35 35 35

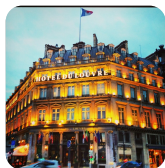


Check-in

Choice of 5 ***** Luxury hotels for your Paris Luxury Package

The hotels we have selected for this package are the following. We have chosen them based on:

- Past customer reviews
- Central location in Paris
- Clean and safe



L'hôtel Du Collectionneur

51/57 Rue de Courcelles, Paris, PARIS, FR, 75008

01 58 36 67 00

Hotel du Louvre, truly a Parisian grand hotel, rises in the very heart of the Paris of arts and culture. Each one of the 4 facades of this luxury hotel looks out on an emblematic monument of Paris: the Louvre Museum, Opera Garnier, the state theatre Comédie Française and the place du Palais Royal.



Victoria Palace Hôtel

6 rue Blaisse Desgoffe, Paris, PARIS, FR, 75006

01 45 49 70 00



Hôtel Raphael

17 avenue Kléber, Paris, PARIS, FR, 75116

01 53 64 32 00

Do you want to live in a sumptuous historic house?
Come in our English Bar and discover Amandine Chaignot, a talented chef, officiates at the Hotel Raphael's restaurant.
Enjoy also our terrace which offers a magnificent 360 degree panoramic view over Paris. Earn Raphael's stickers after 10 check-in.



Le Cinq Codet

5 Rue Louis Codet, Paris, Île-de-France, FR, 75007



1:30 PM

1:30 PM Private guided tour of Paris in a minibus

Your driver/guide will come pick you up at your hotel for a 2.5 hour tour will serve as an introduction to most of the monuments that have made Paris famous. During the 1.5 hour motor coach tour, you'll get a chance to see all the following Parisian landmarks:



Place Vendôme

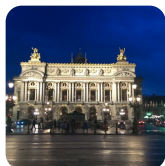
Paris, ÎLE-DE-FRANCE, FR



Concorde

8 Place de la Concorde, Paris, PARIS, FR, 75008

01 42 66 11 07



Palais Garnier

8 Rue Scribe, Paris, PARIS, FR, 75009

0 892 89 90 90



Musée D'orsay

1 Rue de la Légion d'Honneur, Paris, PARIS, FR, 75007
01 40 49 48 14

Le Musée d'Orsay regroupe l'une des plus belles collections au monde d'œuvres impressionnistes et du XIXème siècle.



Palais Du Luxembourg

15 rue de Vaugirard, Paris, PARIS, FR, 75006
01 42 34 20 00



L'Arc de Triomphe de l'Etoile

Paris, Île-de-France, FR, 75017



5:00 PM

Eiffel Tower skip-the-line entrance

Your package includes a skip-the-line entrance ticket to the Eiffel Tower. Now is a great time to use it. end your first day in Paris with the majestic view of the city only the Iron Lady can provide! Your ticket includes ticket to the 2nd floor, but you can purchase the ticket for the top floor on the spot (it costs about 3 euros/person) and the lines are very short.



Eiffel Tower

5 avenue Anatole France, Paris, PARIS, FR, 75007
0 892 70 12 39

Dominant Paris du haut de ses 324 mètres, la Tour Eiffel fut construite de 1887 à 1889 pour l'exposition universelle de 1889. Aujourd'hui, elle est le symbole de la France et le monument le plus visité au monde.

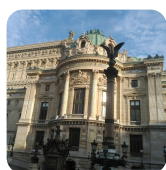
DAY 2



Morning: Private-guided visit of the Louvre museum

After enjoying the breakfast at your hotel it is time to go explore one of the most famous and biggest museums in the world. You can spend days here, but your morning starts with a guided visit of the Louvre museum. This luxury package includes a private-guided visit in a small group tour that includes pick up and drop off at your hotel in Paris, a skip-the-line ticket to the Louvre as well as the service of an expert English-speaking guide,

This tour will be 3 hours long and will end at the Louvre. You can decide to stay longer and visit parts of the museum not seen during the morning.



L'OpenTour

13 Rue Auber, Paris, Île-de-France, FR, 75009
01 42 66 56 56



Musée Du Louvre

99 rue de Rivoli, Paris, PARIS, FR, 75001
01 40 20 50 50

Plus grand musée de France, le Louvre est un ancien palais royal qui accueille aujourd'hui une riche collection d'art du monde entier.



Visit of Notre-Dame on your own

After your Louvre museum tour, you can use your hop on and hop off pass (or you can walk, it's not too far) to Notre-Dame. There are no tickets for entry to Notre-Dame Cathedral so you will be able to enter and visit on your own this marvel of the Middle Ages, still standing in one of the the world's biggest cities.



8E Centenaire De La Cathédrale Notre-Dame De Paris

6 Parvis Notre-Dame - Pl. Jean-Paul II, Paris, PARIS, FR, 75004
+33 1 42 34 56 10

Fondée en 1163, Notre-Dame de Paris est une cathédrale gothique située sur l'Île de la Cité. Avec près de 20 millions de touristes par an, c'est le lieu le plus visité de France.



1:00 PM

Lunch at your leisure

There are a few restaurants close to the Louvre where you will be able to enjoy a typical



2:00 PM

Afternoon at Leisure with a private chauffeur/guide

You're in Paris to take advantage of the beautiful city and enjoy its richness.

We've arranged for you to have a private chauffeur and guide for 4 hours so you can go shopping, visit places you have missed, or just enjoy a ride in the beautiful city. Below are some examples of the tours you can do

Option 1: Spend the afternoon at the Latin Quarter, visiting the Odeon, the small street cour du Commerce, the Pantheon and the Luxembourg Gardens. You'll also have time to visit the Rodin Museum, or the Musee d'Orsay.

Option 2: You can go to Le Marais and visit the Place des Vosges, the Musee Carnavallet. This is less than a mile away from Notre-Dame, so you can easily walk there.

Option 3: You can also choose to visit Montmartre, the small village inside the city that is Paris, and you can enjoy the views of the city from the Place du Tertre. Do stop at the Sacre-Coeur.

Once in Montmartre, go up the hill. You can take the little 'funiculaire' train to go up the hill. Once at the top of Montmartre, enjoy the incredible view of Paris. Stop at the Sacre-Cœur, and go to the little village where the Moulin de la Galette still stands.

Option 4: Go shopping at the big department stores on the Boulevard Haussmann (right behind the Opera). Our favorite is the Galeries Lafayette. Do not miss going to the terrass for yet another impressive view of Paris. Don't miss the rue du Faubourg Saint-Honore and the place Vendome where the most famous and luxury shopping experience is to be had..



Sacré-Cœur

35 Rue du Chevalier de la Barre, Paris, PARIS, FR, 75018
01 53 41 89 00



Le Moulin De La Galette

83 rue Lepic, Paris, PARIS, FR, 75018
01 46 06 84 77

Le moulin de la galette est le seul moulin à vent en état de marche de la butte Montmartre, mais aussi une table d'exception.



Saint-Sébastien

Paris, PARIS, FR, 75004



Place des Vosges

Paris, ÎLE-DE-FRANCE, FR

The Place des Vosges is the oldest planned square in Paris and one of the finest in the city. It is located in the Marais district, and it straddles the dividing-line between the 3rd and 4th arrondissements of Paris.



Panthéon

Place du Panthéon, Paris, PARIS, FR, 75005

01 44 32 18 00



Jardins du Luxembourg

The Jardin du Luxembourg, or the Luxembourg Garden, located in the 6th arrondissement of Paris, was created beginning in 1612 by Marie de' Medici, the widow of King Henry IV of France, for a new residence she constructed, the Luxembourg Palace



Sacré-Cœur

35 Rue du Chevalier de la Barre, Paris, PARIS, FR, 75018

01 53 41 89 00



Musée Carnavalet

16 rue des Francs-Bourgeois, Paris, PARIS, FR, 75003

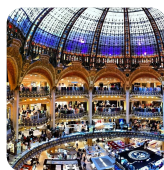
01 44 59 58 58



Musée d'Orsay

1 Rue de la Légion d'Honneur, Paris, ÎLE-DE-FRANCE, FR, 75007

The Musée d'Orsay is a museum in Paris, France, on the left bank of the Seine. It is housed in the former Gare d'Orsay, a Beaux-Arts railway station built between 1898 and 1900



Galeries Lafayette

40 Boulevard Haussmann Bp 329, Paris, PARIS, FR, 75009

01 42 82 34 56



8:00 PM

Seine River Cruise Dinner

For this evening we have saved the best for last: a Seine River dinner cruise line for a dinner you will not forget! This is the best of the Seine dinner cruise, and we have reserved your spots with the best view.



Bateaux Parisiens - Luxury Dinner Cruise - Service Premier

In addition to the classic cruise, enjoy classic French cuisine and wine while adrift along the Seine. Take in magical nighttime cityscapes alongside an orchestra with a singer to set the tempo for a special night.

A Blanc de Blancs Kir aperitif accompanied by cheese puffs will be served followed by a selection of Sancerre and Chateau de Puisseguin Les Aubiers wines.

Boards at 8 pm for 8:30 departure. Return at 11 pm. Reservations required, as space is limited.

Price of this service subject to increase on holidays including the following dates: December 24, 25, 31; Valentine's Day (February 14), and July 14.

DAY 3



Departure

Transfer from your hotel to Paris airport or Paris train station

On this last morning, enjoy your breakfast at the hotel. When you are ready for your transportation back to the Paris airport, your driver will pick you up.



Charles De Gaulle International Airport

Paris, PARIS, FR, 95700

+33 1 48 62 22 80

Paris-Charles de Gaulle Airport, also known as Roissy Airport (or just Roissy in French), in the Paris area, is one of the world's principal aviation centres, as well as France's largest airport. It is named after Charles de Gaulle (1890–1970).



Aéroport De Paris-Orly

Paray Vieille Poste, ESSONNE, FR, 91550

01 49 75 15 15



Gare du Nord

18 Rue de Dunkerque, Paris, ÎLE-DE-FRANCE, FR, 75010

0 892 35 35 35



Paris Gare de Lyon

Place Louis Armand, Paris, PARIS, FR, 75571

0 892 35 35 35



Price per person: \$1,679.00 USD

INCLUDED IN THIS 3-DAY LUXURY PACKAGE:

- Round Trip Private transportation from CDG or Orly airport to your hotel in Paris
- 2 night accommodation (based on double room) in a selected 5 **** star hotel, breakfast included.
- Private Paris 2.5 hour discovery tour with pick up and drop off at your hotel
- Skip-the-line Eiffel tower entrance ticket.
- Private-guided tour of the Louvre Museum (with skip-the-line ticket entrance and pick up and drop off at your hotel in Paris)
- Bateaux Parisiens Premier Seine Dinner cruise

Please note the the price is based on 2 people traveling together and sharing a room. A supplement of \$906.00 USD will be charged for a person traveling alone.

