



**Agent (France.com)**  
1 800 230 0426  
<http://www.france.com>  
[reservations@france.com](mailto:reservations@france.com)



## 6-Day Paris and London Budget Package

\$989.00 USD PER PERSON



## TRIP SUMMARY

---

### Day 1

Arrival and transfer - Charles De Gaulle International Airport, Orly Airport, Paris Gare de Lyon, Gare du Nord

Choice of hotels for your Paris Budget Package - Hotel Romance Malesherbes by Patrick Hayat, Belta Hôtel Residence, Hotel Gardette Park, Elysees Opera Hôtel

Guided tour of Paris in a motor coach - Place Vendôme, Concorde, Palais Garnier, Musée D'orsay, Palais Du Luxembourg, L'Arc de Triomphe de l'Etoile

Eiffel Tower skip-the-line entrance - Eiffel Tower

### Day 2

Louvre visit on your own - L'OpenTour, Musée Du Louvre

Visit of Notre-Dame - 8E Centenaire De La Cathédrale Notre-Dame De Paris

Lunch at your leisure

Visit of Montmartre - Sacré-Cœur, Le Moulin De La Galette

### Day 3

Morning tour of Versailles - Château De Versailles

Afternoon at Leisure - Les Amis Du Musée D'orsay, Cluny Museum - National Museum of Medieval Art, Luxembourg Gardens, Panthéon, Musée Carnavalet, Place Saint-Germain des Prés, Sainte-Chappelle, Conciergerie

### Day 4

Transfer from your hotel to Paris Gare du Nord - Gare du Nord

Eurostar to London

Transfer from Saint Pancras station to London hotel - Saint Pancras Station

Hop on and Hop Off Thames River Cruise

London Eye ticket - EDF Energy London Eye + London Eye River Cruise

Choice for your Hotel in London - DoubleTree by Hilton London - Greenwich, Hotel ibis Styles London Excel, St Giles Hotel, Hotel Rafayel

### Day 5

8:45 AM

Royal London Morning Tour by bus - Orangery At Kensington Palace, Buckingham Palace, Royal Albert Hall, Big Ben

London Hop on and Hop off bus - Number 10 Downing Street, The National Gallery, Westminster Abbey, Big Ben, Tate Modern, EDF Energy London Eye + London Eye River Cruise, St. Paul's Cathedral, Hyde Park

---

**Day 6**

Transfer from London hotel to St Pancras station - St. Pancras International Train Station

Price per person: \$989.00 USD

# DAY 1



## Departure

### Arrival and transfer

After landing at your Paris airport or Paris train station and having gone through customs, you'll meet your driver who will drive you to your hotel in Paris.

You'll be able to check in, and depending on your arrival time, the room may be ready for you. If your plane lands in the morning, the room may not be ready yet, but you'll get a chance to leave your luggage at the hotel so you can start your discovery of Paris.



#### Charles De Gaulle International Airport

Paris, PARIS, FR, 95700

01 70 36 39 50



#### Orly Airport

Orly, ESSONNE, FR, 94390

0 892 56 39 50



#### Paris Gare de Lyon

Place Louis Armand, Paris, PARIS, FR, 75571

0 892 35 35 35



#### Gare du Nord

18 Rue de Dunkerque, Paris, ÎLE-DE-FRANCE, FR, 75010

0 892 35 35 35



## Check-in

### Choice of hotels for your Paris Budget Package

The hotels we have selected for this package are the following. We have chosen them based on:

- Past customer reviews
- Central location in Paris
- Clean and safe



#### Hotel Romance Malesherbes by Patrick Hayat

129 Rue Cardinet, Paris, FR, 75017

01 44 15 85 00



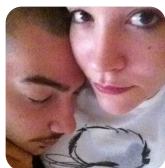
### **Belta Hôtel Residence**

46 rue Lucien Sampaix, Paris, PARIS, FR, 75010  
01 46 07 23 87



### **Hotel Gardette Park**

1 Rue du Général Blaise, Paris, ÎLE-DE-FRANCE, FR



### **Elysees Opera Hôtel**

17 rue de Turin, Paris, PARIS, FR, 75008  
01 43 87 56 50



## **Guided tour of Paris in a motor coach**

This tour will serve as an introduction to most of the monuments that have made Paris famous. During the 1.5 hour motor coach tour, you'll get a chance to see all the following Parisian landmarks:



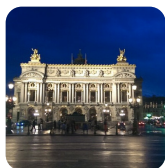
### **Place Vendôme**

Paris, ÎLE-DE-FRANCE, FR



### **Concorde**

8 Place de la Concorde, Paris, PARIS, FR, 75008  
01 42 66 11 07



### **Palais Garnier**

8 Rue Scribe, Paris, PARIS, FR, 75009  
0 892 89 90 90



### **Musée D'orsay**

1 Rue de la Légion d'Honneur, Paris, PARIS, FR, 75007  
01 40 49 48 14



### **Palais Du Luxembourg**

15 rue de Vaugirard, Paris, PARIS, FR, 75006  
01 42 34 20 00



### **L'Arc de Triomphe de l'Etoile**

Paris, Île-de-France, FR, 75017



## Eiffel Tower skip-the-line entrance

Your coach will now bring you to the top monument in Paris: the Eiffel Tower. You'll go through the entrance skipping the line (not the security lines, though). Your tour ends here, so you can take in all the time you want at the Iron Lady. Most people stay between 1.5 and 2 hours. Please note that your ticket includes a ticket to the 2nd floor, but you can purchase the ticket for the top floor on the spot (it costs about 3 euros/person) and the lines are very short.



### Eiffel Tower

5 avenue Anatole France, Paris, PARIS, FR, 75007

0 892 70 12 39

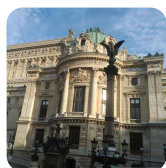
## DAY 2



### Louvre visit on your own

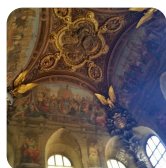
Take your hop on and Hop Off bus and go to the 1st stop on the green line to board your bus. Enjoy the English commentary as you get to the Louvre Museum. Stop at number 4. From here you will go get your skip-the-line Louvre entry tickets at a kiosk near the Louvre Pyramid.

With your tickets in hand it's time to visit the Louvre Museum. Most visits take between 3 and 4 hours.



#### L'OpenTour

13 Rue Auber, Paris, Île-de-France, FR, 75009  
01 42 66 56 56



#### Musée Du Louvre

99 rue de Rivoli, Paris, PARIS, FR, 75001  
01 40 20 50 50



### Visit of Notre-Dame

Take the hop on and hop off bus at the same stop where you left it, going in the same direction, you are going to stop 7, Notre-Dame. There are no tickets for entry to Notre-Dame Cathedral so you will be able to enter and visit on your own this marvel of the Middle Ages, still standing in one of the world's biggest cities



#### 8E Centenaire De La Cathédrale Notre-Dame De Paris

6 Parvis Notre-Dame - Pl. Jean-Paul II, Paris, PARIS, FR, 75004  
+33 1 42 34 56 10



### Lunch at your leisure

There are a few restaurants close to the Louvre where you will be able to enjoy a typical lunch.



### Visit of Montmartre

Take the hop on and hop off bus at the same stop where you got to Notre-Dame. Take the Blue line, but going in the opposite direction: you will now make your way back to the Opera (where you started). Change for the Yellow line at Station Opera (number 2 on the Blue Line). You are going to take the Yellow Line to go to station

52 : Montmartre. The total ride will take about 45 minutes

Once in Montmartre, go up the hill. You can take the little 'funiculaire' train to go up the hill. Once at the top of Montmartre, enjoy the incredible view of Paris. Stop at the Sacre-Cœur, and go to the little village where the Moulin de la Galette still stands.

Take the yellow line stop 52 to get back to your hotel.



### **Sacré-Cœur**

35 Rue du Chevalier de la Barre, Paris, PARIS, FR, 75018

01 53 41 89 00



### **Le Moulin De La Galette**

83 rue Lepic, Paris, PARIS, FR, 75018

01 46 06 84 77



## DAY 3



### Morning tour of Versailles

After breakfast at your hotel, you will meet at our agency near the Louvre for your full-day visit of Versailles palace and its splendid gardens.

The lavish style of Versailles has been restored to its previous splendor, dazzling you with fascinating details of the royal court that ruled France in the 18th Century.

Learn about the palace's history, and explore its unique interior rooms, including the King's and the Queen's State Apartments and the Royal Chapel.

You will then have free time to discover the gardens, the results of an engineering feat and the genius of Le Notre's design and vision. Please note that in the summer, fountain shows are on display.

Tickets for the Fountain shows are sold in Versailles only and will not be included as part of the package.

Return to your hotel at your leisure

Overnight at the hotel.



#### Château De Versailles

Place d'Armes, Versailles, YVELINES, FR, 78000  
01 30 83 78 00



### Afternoon at Leisure

Today is your free day to explore Paris.

There are many sites that you still have time to visit, such as the Musee d'Orsay, the Musee Rodin, The Picasso Museum and the Musee Carnavallet.

Here are 2 half-day options if you are looking for ideas:

1. Latin Quarter.

Start your tour with a visit of the Luxembourg Gardens for about 45 minutes. Then head to the Place du Pantheon and tour the Latin Quarter where the Sorbonne is located (30 mn). Walk to Place Saint-Germain des Pres, heart of the Parisian classical neighborhood. Take the Hop on and Hop Off bus to the Musee d'Orsay for a visit. (2 hours).

2. Marais

Start your tour at the Place des Vosges, the oldest and arguably the most beautiful of all Paris squares. Walk 15 minutes to the Musée Carnavalet, rich with Paris history, and one of the best museums in the city. (1.5 hour visit). Continue walking towards the Seine and go to the Sainte-Chappelle, which displays some of the most striking stained glass artwork done in the middle ages. (1 hour visit). Next to the Sainte-Chappelle you can also visit the Conciergerie where Marie-Antoinette was jailed and spent her last days.



### **Les Amis Du Musée D'orsay**

62 rue de Lille, Paris, PARIS, FR, 75007

01 40 49 48 14



### **Cluny Museum - National Museum of Medieval Art**

6 Place Paul Painlevé, Paris, ÎLE-DE-FRANCE, FR, 75005

+33 1 81 97 35 88



### **Luxembourg Gardens**

15 rue de Vaugirard, Paris, PARIS, FR, 75006

01 44 54 19 49



### **Panthéon**

Place du Panthéon, Paris, PARIS, FR, 75005

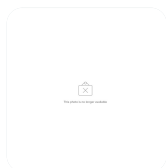
01 44 32 18 00



### **Musée Carnavalet**

16 rue des Francs-Bourgeois, Paris, PARIS, FR, 75003

01 44 59 58 58



### **Place Saint-Germain des Prés**

Place Saint-Germain des Prés, Paris, ÎLE-DE-FRANCE, FR, 75006



### **Sainte-Chappelle**



### **Conciergerie**

2 Boulevard du Palais, Paris, ÎLE-DE-FRANCE, FR, 75001

## DAY 4

---



Departure

### Transfer from your hotel to Paris Gare du Nord

On this last morning, enjoy your breakfast at the hotel. When you are ready for your transportation to Paris Gare du Nord, your driver will pick you up.



#### Gare du Nord

18 Rue de Dunkerque, Paris, ÎLE-DE-FRANCE, FR, 75010  
0 892 35 35 35



Departure

### Eurostar to London



Departure

### Transfer from Saint Pancras station to London hotel



#### Saint Pancras Station

Euston Road, London, England, GB, N1C 4QL



### Hop on and Hop Off Thames River Cruise

See London's famous sights on a leisurely cruise of the River Thames. The River Red Rover ticket enables you to hop on and hop off at any of London's main destination piers, such as Westminster, London Eye, Tower, and Greenwich.

Explore the River Thames as it weaves through the heart of London and discover fascinating history around every bend. Today, you can experience the splendor of this great city from the relaxed comfort of a modern, all-weather and wheelchair-friendly sightseeing boat. Informative commentary interlaced with colorful tales of the city's past will keep your mind engaged as you cruise down the Thames!

Cruises depart frequently from Westminster Pier, London Eye Pier, Tower Pier, and Greenwich Pier, sailing every day of the year except Christmas Day. With a regular timetable, and evening cruises all summer, you can enjoy a full-day on the river in comfort.

Hop on and off the boat as many times as you wish to explore sights such as the Cutty Sark, the Royal Observatory, Tower of London, St. Paul's Cathedral, Tate Modern, Borough Market, South Bank Centre, and the London Eye.

Or grab a refreshment from the on-board bar and relax as you sail past Big Ben,

the Houses of Parliament, Westminster Bridge, the Royal Festival Hall, Cleopatra's Needle, Somerset House, the Millennium Footbridge, Shakespeare's Globe, Monument, H.M.S. Belfast, and much more.



## London Eye ticket

See London from a different perspective on the London Eye and enjoy the new 4D Experience, a groundbreaking 3D film with spectacular in-theater effects that include wind, bubbles, and mist. Fast-track admission is also available.

### What to Expect

At 135 meters, the London Eye is one of the world's tallest observation wheels, offering breathtaking views of London and its famous landmarks. Your ticket includes new interactive guides powered by Samsung Galaxy Tab and an entry to the London Eye 4D Experience, an inspiring journey of discovery that brings London to life through multi-sensory special effects.

The perfect prelude to your flight on the London Eye is a visit to the new 4D Experience. This groundbreaking 3D film is combined with spectacular in-theater effects that include wind, bubbles, and mist to add a breathtaking 4th dimension. The 4D Experience is included in the ticket price!

If you'd like to be guaranteed skip-the-line entrance, be sure to select the 'fast-track' option.

Infants aged 3 years and under are free, but must still reserve a ticket.



### EDF Energy London Eye + London Eye River Cruise

London Eye Millennium Pier, London, GREATER LONDON, GB,  
SE1 7PB

0870 990 8881



Check-in

## Choice for your Hotel in London

The hotels we have selected for this package are the following. We have chosen them based on:

- Past customer reviews
- Good location
- Clean and safe



**DoubleTree by Hilton London - Greenwich**

London, England, GB, SE10 8FR

020 8469 4440



**Hotel ibis Styles London Excel**

London, England, GB, E16 3BY

020 7474 0011



**St Giles Hotel**

Bedford Ave, London, GREATER LONDON, GB, WC1B 3GH

020 7300 3000



**Hotel Rafayel**

34 Lombard Road, London, England, United Kingdom, SW11 3RF

020 7801 3610

## DAY 5



8:45 AM  
GMT  
Standard  
Time

### Royal London Morning Tour by bus

Discover the royal sights of London in this wonderful morning tour. Visit Kensington Palace, the Parliament Square, and Westminster Abbey, stroll past the iconic Big Ben, admire the Changing of the Guard at Buckingham Palace, and end in Trafalgar Square.

Discover the spectacular royal sights and monuments of London on this wonderful morning tour through the city.

Begin the day with a panoramic drive around Parliament Square. Admire the stunning Westminster Abbey, where Prince William and Kate Middleton recently married, and then continue to the Kensington Palace which is the former home of Diana, Princess of Wales. Pay a visit to the Royal Albert Hall and Albert Memorial, and then continue the tour to St. James's Park.

Stop before the beautiful Buckingham Palace to marvel at the colorful ceremony of the Changing of the Guard, backed by an impressive military band. End the fascinating tour in the lovely Trafalgar Square at around noon, at which point your guide will be happy to give suggestions for lunch and assistance with transportation back to your hotel.

#### What's Included

- Professional tour guide
- Transport in a 1st-class luxury bus
- Personal headset



#### Orangery At Kensington Palace

Kensington Gardens, London, GREATER LONDON, GB, W8 4QS  
020 3166 6113



#### Buckingham Palace

Buckingham Palace Rd, London, GREATER LONDON, GB, SW1A  
1AA  
020 7930 4832



#### Royal Albert Hall

Imperial College Road, London, England, GB, SW7 2AP



## Big Ben

Parliament Sq, London, GREATER LONDON, GB, SW1A 0AA  
020 7219 4272



## London Hop on and Hop off bus

See the capital's top attractions with London's Original Hop-on Hop-off Bus Tour. Stop by Buckingham Palace, Westminster, Piccadilly Circus, London Eye, Tower of London, the River Thames and much more. Get free walking tours and a Thames River Cruise Pass

From the first time you hop on you'll have up to 48 hours to explore London's top sights, helping you to get to know the city at your own pace.

Tune in to the multi-language commentaries to discover the history behind each attraction, or simply listen to your live guide (yellow route only) who will help bring London's past to life in front of your eyes.

If you tire of the road, why not head down to the river? Enjoy a complimentary Thames River Cruise Pass alongside your hop-on hop-off tour – ideal for checking out the Big Smoke from a whole new angle! The hop-on hop-off river cruise pass is valid for the same period of time as your bus ticket.

Between Tuesday 17 May & Thursday 30 June, anyone traveling on a 24-hour ticket will get up to 12 hours extra FREE!

### Original London Sightseeing Hop-on Hop-off Bus Route:

Piccadilly Circus

Buckingham Palace and the Changing of the Guard

10 Downing Street

Southwark Cathedral

Statue of Eros

St. James's Park

Horse Guards' Parade

London Dungeon

The National Gallery

Westminster Abbey

St. Martin-in-the-Fields

HMS Belfast

Nelson's Column

Big Ben and Parliament

Covent Garden

Tower Bridge

Trafalgar Square

Lambeth Palace

Fleet Street

Tower of London

St. James's Palace

The London Eye

St. Paul's Cathedral

Shakespeare's Globe

Ritz Hotel

London Aquarium

Bank of England Museum

Tate Modern

Hyde Park

Westminster Pier

Monument

Speakers' Corner

Wellington Museum



## London Bridge



### Number 10 Downing Street

10 Downing Street, City of Westminster, GREATER LONDON, GB,  
SW1A 2AA  
+44 20 7270 3000



### The National Gallery

30 Orange St, London, GREATER LONDON, GB, WC2N 5DN  
020 7747 2885



### Westminster Abbey

20 Deans Yard, London, GREATER LONDON, GB, SW1P 3PA  
+44 20 7222 5152



### Big Ben

Parliament Sq, London, GREATER LONDON, GB, SW1A 0AA  
020 7219 4272



### Tate Modern

53 Bankside, London, GREATER LONDON, GB, SE1 9TG



### EDF Energy London Eye + London Eye River Cruise

London Eye Millennium Pier, London, GREATER LONDON, GB,  
SE1 7PB  
0870 990 8881



### St. Paul's Cathedral

St Paul's Churchyard, London, GREATER LONDON, GB, EC4M  
8AD  
020 7246 8350



### Hyde Park

Serpentine Rd, London, GREATER LONDON, GB, W2 2UH  
0300 061 2000

## DAY 6



Departure

### Transfer from London hotel to St Pancras station



#### St. Pancras International Train Station

Euston Rd, London, GREATER LONDON, GB, N1C 4QL  
+44 20 7843 7688



### Price per person: \$989.00 USD

INCLUDED IN THE 6-DAY BUDGET PACKAGE:

- Roundtrip Airport or train station transfers in Paris
- 3 nights accommodation in a select 2 or 3 \*\* hotel, breakfast included, based on 2 people sharing a double room.
- 3 hour Paris discovery tour with skip-the-line Eiffel tower entrance ticket
- 2-day pass on the Paris hop-on and hop-off buses
- 1 hour Seine River sightseeing cruise
- Louvre skip-the-line entrance ticket
- Morning guided walking tour Versailles by train guided tour of Versailles
- Eurostar 2nd Class train ticket Paris - London
- Roundtrip train station London hotel transfers
- 2 nights accommodation in a select 3\*\*\* London hotel, with breakfast included,
- London Eye Ticket Entrance
- 2 Day London hop-on and hop-off passes
- Hop-on and hop-off Thames River Cruise
- Royal London Morning tour by bus

PLEASE NOTE: Prices are based on 2 people traveling together. A single supplement of \$350.00 will be assessed for all reservations made for 1 person only.